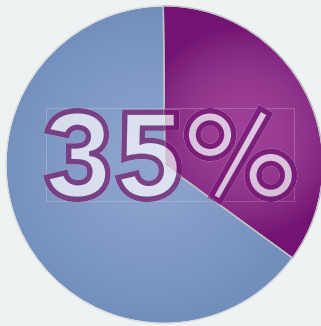


## PADnet® 2.0 Disease Management System

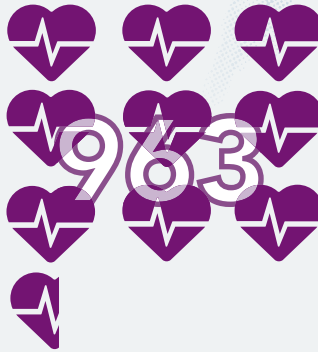
## CASE STUDY

Anne Arundel Medical Center (AAMC)  
PADnet DMS 2.0 Program

**PATIENTS WITH PAD**  
(OF 3,285 TESTED WITH PADnet)



**HIGHER LEVEL STUDIES**  
(OF 1,149 WITH PAD)



**INTERVENTIONAL PROCEDURES**  
(OF 1,149 WITH PAD)

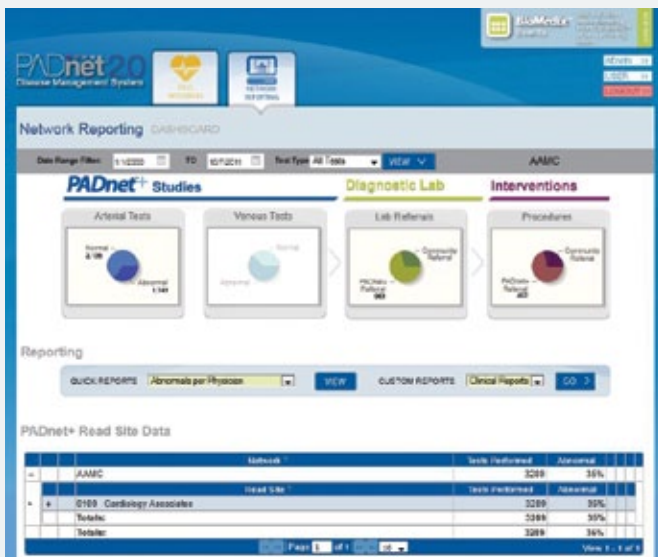


**3,285** patients were tested with PADnet in primary care practices as part of AAMC's PADnet DMS 2.0 program.

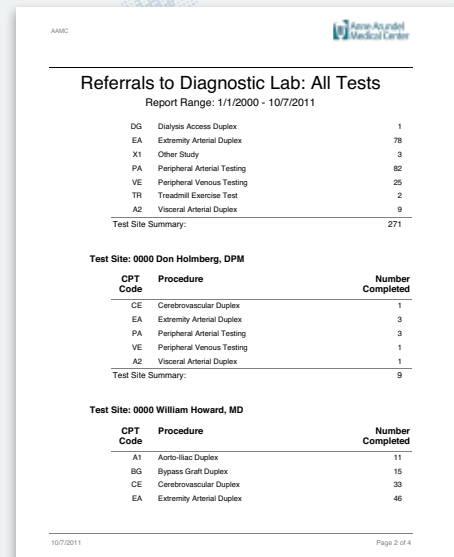
**1,149** (35%) of 3,285 tested with PADnet were found to have Peripheral Artery Disease (PAD).

**963** higher level studies were completed for PAD patients referred on to the diagnostic lab.

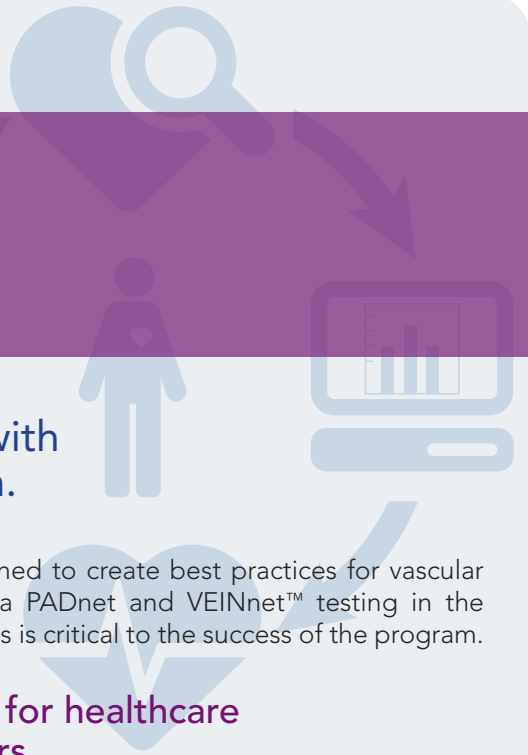
**442** interventional procedures were completed on PAD patients who were referred after a higher level study.



Anne Arundel's PADnet DMS 2.0 Network Reporting Dashboard displays abnormality rates, referrals and important Read Site information at a glance.



Anne Arundel's PADnet DMS 2.0 program provides valuable reports about program activity.



## PADnet® 2.0 Disease Management System

Expand your vascular care program and connect with other care providers in a collaborative care system.

PADnet Disease Management System 2.0 is a collaborative care solution designed to create best practices for vascular program planning and growth while finding patients with vascular disease via PADnet and VEINnet™ testing in the community. The ability to track network activity and clinical and financial outcomes is critical to the success of the program.

### Strengthen care provider relationships

With PADnet DMS 2.0, hospitals, health systems, and specialist practices are the center of a BioMedix disease management system network linked to community primary care providers. This partnership builds the foundation for collaboration and helps eliminate gaps in patient care.

With this approach, front-line locations can detect vascular disease as early as possible, limiting costly disease progression. Further treatment (when necessary) can then be efficiently coordinated with the partner hospital or specialist. As stakeholders in the early identification and treatment of vascular disease, all participants are invested in the success of the program.

### Program marketing and launch support

BioMedix provides a turnkey program to PADnet DMS 2.0 clients that assists with the overall launch of the program internally and within the community.

### Key benefits for healthcare administrators

- Customizable for each healthcare facility
- Powerful web-based reporting with graphing
- Ability to query financial analysis for any given period
- Real-time activity tracking for entire program
- Complete transparency for quantifiable program results

### Reporting options

- Abnormality rates & physician utilization
- Diagnostic or interventional procedures performed
- Patient history, indication/risk factor analysis
- Referrals to diagnostic lab
- Referrals to interventional suite
- Diagnostic lab & interventional suite revenue analysis

**“It is well known that PAD is under-diagnosed and under-treated...The biggest obstacle to early diagnosis has been low rates of office-based PAD diagnosis. PADnet offers a solution with a fast and easy to perform PAD detection system.”**

— JOHN D. MARTIN, MD, FACS

Medical Director of the Heart and Vascular Institute at Anne Arundel Medical Center, Annapolis, MD